

SCOUT X-GAMES

Kickoff for Scouting's 100th Anniversary

At Landshark Stadium!!!!



**Friday, December 4th &
Saturday, December 5th, 2009**



**Fireworks
Movie
Snow**



**Cub Mobile Races
Rain gutter
Regatta**



**Family
Entertainment
Climbing Walls**



**Pinewood Derby
Games
Model Rockets**



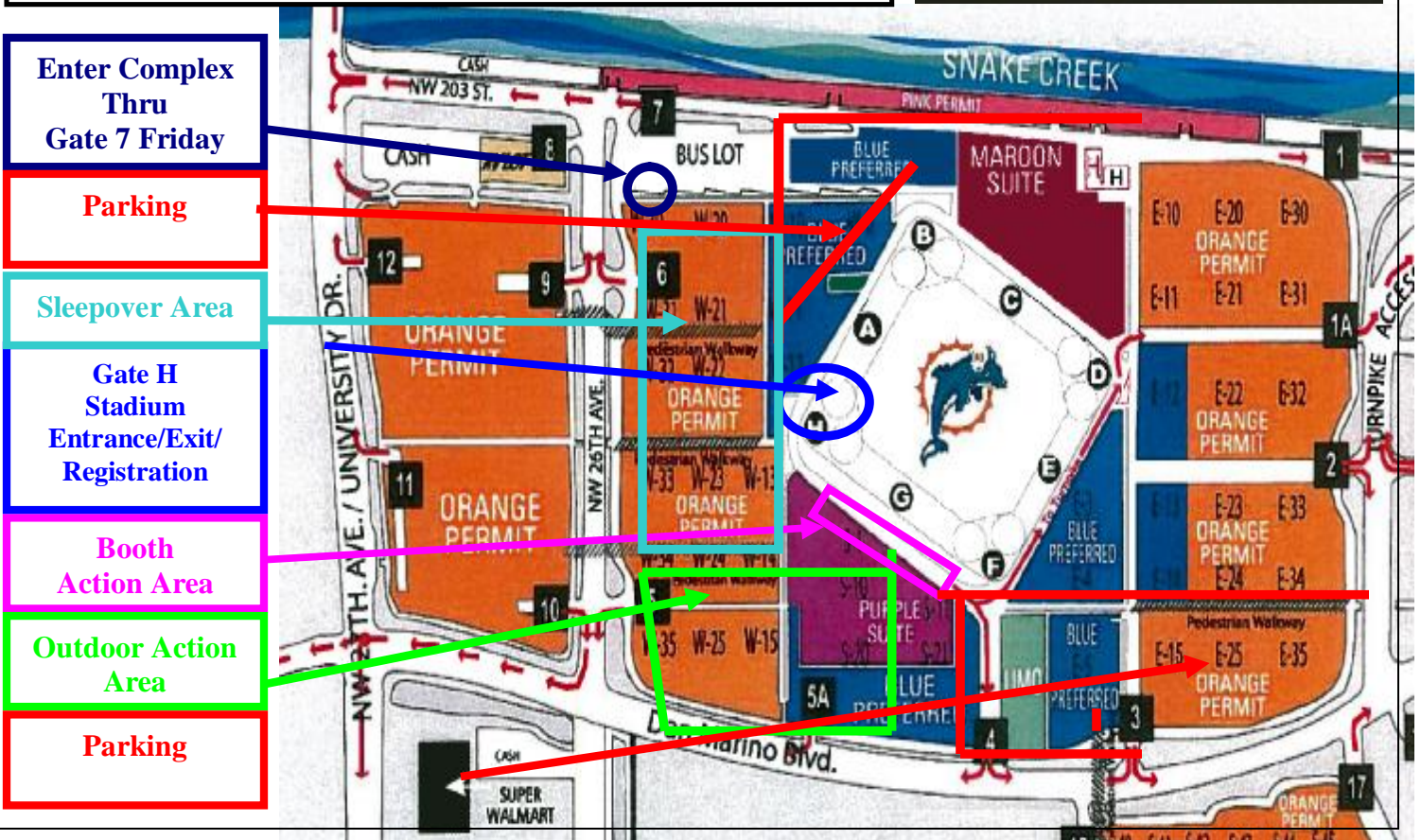
Friday Night Sleepover

Schedule of Events

4:00 p.m. – 9:00 p.m.	Please enter stadium grounds through Gate 7. Arrive, set up camp and check-in. (Gate H)
4:00 pm. – 9:00 p.m.	The indoor and outdoor areas are open for booth set up.
6:00 p.m. – 9:00 p.m.	Dinner – Pollo Tropical Each paid participant will receive a quarter-chicken meal and a soda.
8:15 p.m.	Stadium Opens for Movie & Fireworks
8:45 p.m.	Fireworks
9:00 p.m.	Movie
Lights Out	60 minutes after the movie ends.

Stadium Bathrooms on the ground level (flush toilets and sinks) will remain open all night!

Saturday Morning Break camp. Units need to police their campsite and the surrounding area for trash.



Scout Extreme Games

Saturday, December 5th



Schedule of Events

6:30 a.m. – 9:45	Booth setup (Gate H) Mama Jennie's Hot Breakfast (minimal cost)
7:30 a.m.	Popcorn Sale "Fill It Up" Breakfast
8:30 a.m.	Each Unit should send 2 Scouts with the Unit and American flags to Gate H to participate in the opening ceremony.
9:00 a.m.	Opening Ceremony (Gate H)
9:00 a.m. – 3:00 p.m.	Outdoor booths/ Activities/Amusements open.
9:30 a.m. – 2:30 pm.	Family Entertainment Stage Shows Hourly (Mad Science, Animal Show, Magician, Etc.)
10:00 a.m.	Booth Judging
10:30 a.m.	Eagle Alumni Reception
11:30am-1:30pm	Mama Jennie's Lunch (minimal cost) (Gate H)
1:00 p.m.	Booth Judges announce winners and award recognition to Packs, Troops, Teams and Crews.
3:00 p.m.	Scout Extreme Games Show ends.

Unit Participation at the Scout Extreme Games

Steps:

1. Your unit 2009 Scout Extreme Games Chairperson should coordinate your Unit's Display.
2. Select the area Stadium your unit will exhibit in - Stadium (Indoor) or Extreme Activities (Outdoors) Give your Scouts the opportunity to brainstorm and create your participation. Start early! Your participation should be filled with active demonstrations. It should be fun to carry out, as well as for visitors to enjoy.
3. Mail or return the booth participation form to the council office by November 20, 2009, to reserve your space at the Scout Extreme Games.
4. Use your regular pack and troop meetings to plan and build your extreme interactive demonstration or activity. This process is a great fall activity. Scout's participation in the planning will excite them for the Scout Extreme Games!

Your Participation

- *Allows Scouts to demonstrate skills and abilities.
- *Provides a program for your unit.
- *Stimulates advancement.
- *Exposes Scouts and families to new ideas .
- *Gives an opportunity to meet and interact with fellow Scouts and Scouters across the council.

Booth Size

- *Because of the available space at Dolphin Stadium, your unit demonstration or activity can be any size.
- *Complete and return reservation form no later than November 20th to ensure your booth request is met.

Materials

- *South Florida Council will provide every unit with 1 table and 2 chairs.
- *Unit must provide any required materials for their Action Center demonstration or activity.

Set-Up

- *Friday, December 4th: 4:00 PM –9:00 PM
- *Saturday, December 5th: 6:30 AM –9:00 AM
- *Set-up must be completed and functioning at 9:00 a.m.

Unit Activity or Demonstration must be maintained by at least one Adult and one Scout at all times.

First Aid

- *First Aid will be available at the Scout Extreme Games.

Signage

- *Create a sign that includes your unit number, chartered partner, and “title” of your unit’s activity or demonstration.

Safety

- *Adequate and qualified adult supervision to insure all requisite safety standards and precautions must be met at all times.

Fire/Cooking

- *Cooking fires/demonstrations will be restricted to specific outdoor areas. Food will be available by Mama Jennie’s for at minimal cost for both BREAKFAST and LUNCH.

Communications

- *Sorry, no loudspeakers, bullhorns, etc. allowed.

Commercialism

- *NO items or services may be sold by units.
- *NO raffles allowed.

Action Center Tear Down and Clean-Up

- *Tear down of booths can begin after 3:00 p.m.
- *Please do not break down before 3:00 p.m. in the interest of safety and courtesy.
- *Thoroughly clean your exhibit area.
- *Properly dispose all refuse.

SCOUT EXTREME GAMES TIPS

- Ø The Scout Extreme Games is the South Florida Council’s largest program event. More than 5,000 Scouts, leaders, parents and visitors are expected to attend this new EXTREME Scouting event
- Ø Pre-register by November 20th and save \$5 for each Scout. Exhibit set up on Friday, December 4th from 4:00 PM to 9:00 PM and on Saturday, December 5th from 6:30 AM to 9:00 AM
- Ø Two deep adult leadership and Youth Protection Training are required for the Scout Extreme Games and/or Sleepover camping
- Ø Cooking fires are permitted at the Sleepover camping and Action Center areas only. All fires must be 18” above ground level fueled by charcoal or bottled propane only and under the supervision of a qualified adult
- Ø Instead of Cooking, Let **MAMA JENNIE’S** serve you a Hot Breakfast and Lunch for a minimal cost.
- Ø Check and recheck your activity or demonstration to insure it complies with Health the Safety Standards
- Ø Exhibit tear down and check out starts at 3:00 P.M. and not sooner.

REGISTRATION FORM



REGISTRATION FORM - Early Bird Deadline is November 20, 2009

____ Scouts and Siblings @ \$20 for Sleepover, Dinner, Fireworks, Movie and All-Day Saturday Pass

____ Scouts and Siblings @ \$15 - All- Day Saturday Pass

____ Adults @ \$15 - Sleepover, Dinner, and All-Day Saturday Pass

____ Adults @ \$15- All -Day Saturday Pass

____ **Oops! It is after November 20th; please add \$5 per person.**
(\$25 for Youth and \$20 for Adults for a Weekend Pass)
(\$17.00 for Youth and Adults All Saturday Pass)



____ **TOTAL ENCLOSED** Please mail to:

Extreme Games, South Florida Council, 15255 NW 82 Avenue, Miami Lakes, FL 33016

Unit Type & # _____ District _____

Unit Contact _____ Email _____

Will you have a booth? ___ Yes ___ No Outside? ___ Inside ___ Outside

Space Desired ___ 10' x 10' ___ 10' x 20' ___ Other, Specify _____

Proposed Booth Idea _____

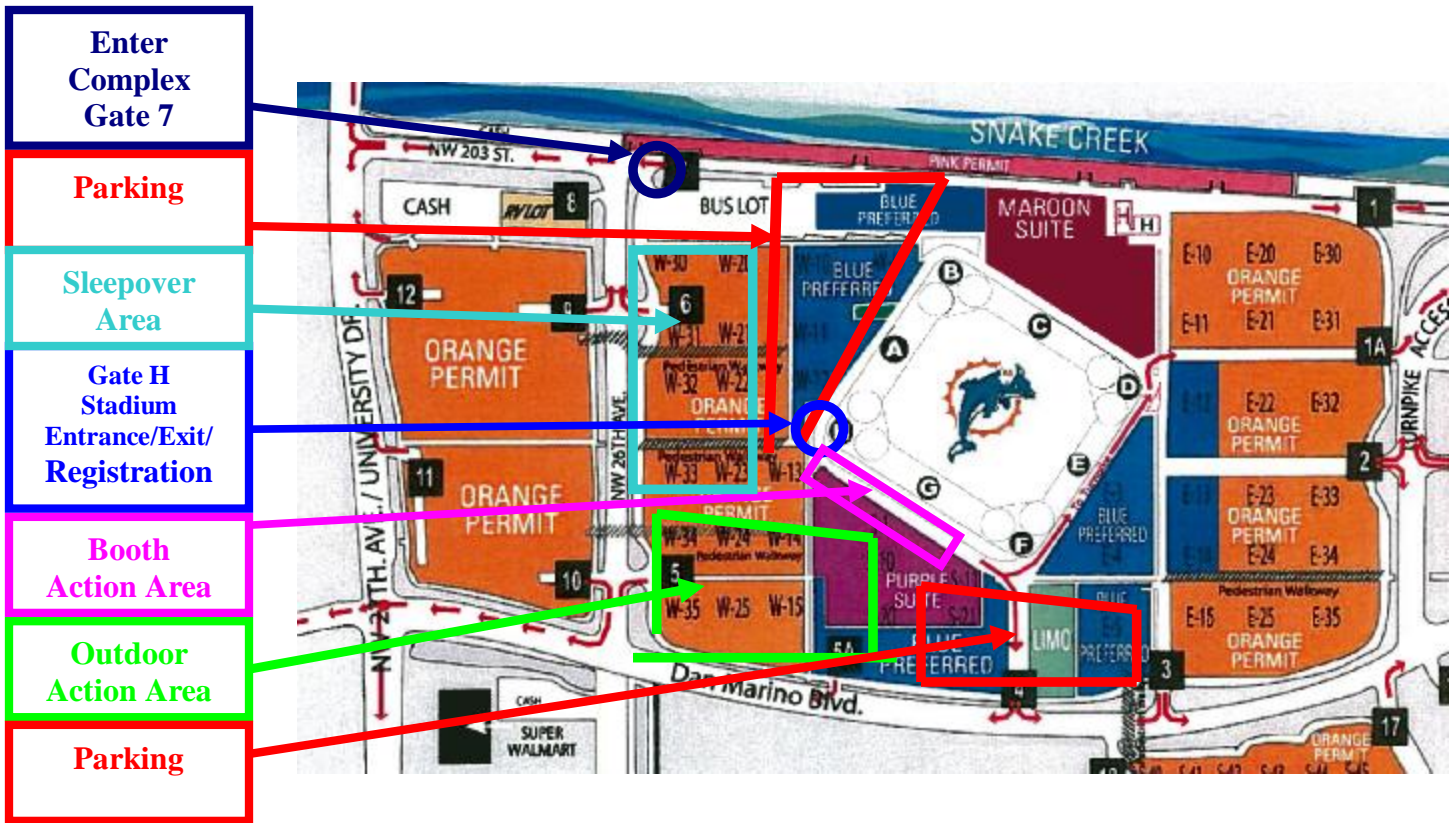
The Scout Extreme Games Leader's Guide is available on www.sfcbsa.org.

Each booth will have one 8-foot table and 2 chairs. Electricity is very limited, please let us know early.



SW#900082

Scout Extreme Games Saturday, December 5th



FOOD INFORMATION

Friday, December 4, 2009

6:00 pm. – 9:00 p.m.

Dinner will be provided by Pollo Tropical for every registered participant.

Saturday, December 5, 2009

7:15 a.m.

Popcorn “Fill It Up” Club Members (Scouts who filled up an entire Take Order form during the Popcorn Sale and submitted them to the Council for the weekly drawings) will receive a special invitation to the “Fill It Up” Breakfast. Scouts invited should meet at Gate “H” at 7:15 a.m..



Breakfast and Lunch will be made available by Mama Jennie’s.



South Florida Council, Inc
Boy Scouts of America
15255 NW 82 Avenue
Miami Lakes, FL 33016

**TIME SENSITIVE
REGISTRATION MATERIALS
ENCLOSED!**



**AN ADVENTURE YOUR SCOUTS WILL NOT WANT TO MISS!!!
SEE INSIDE FOR MORE DETAILS.**